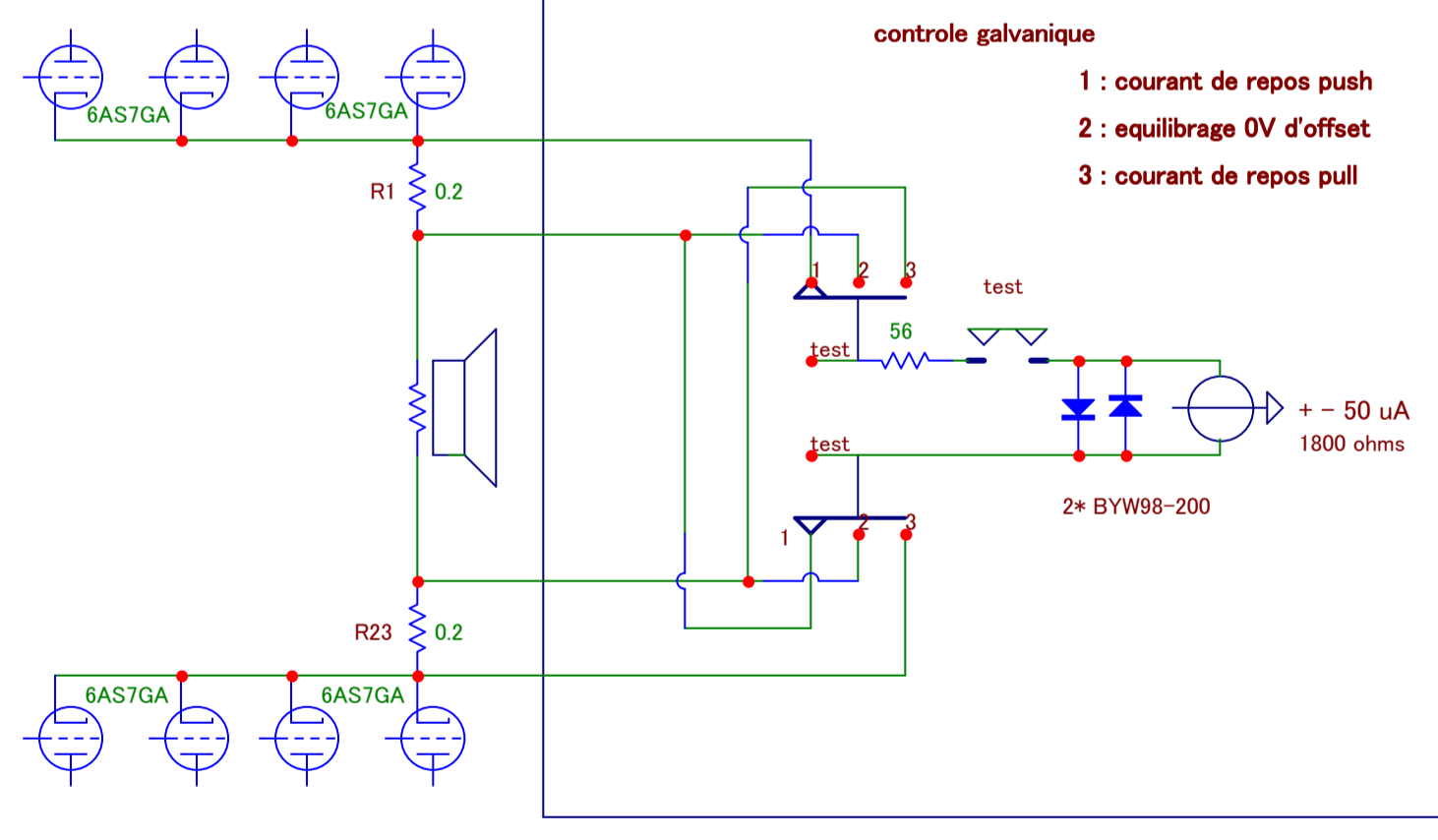
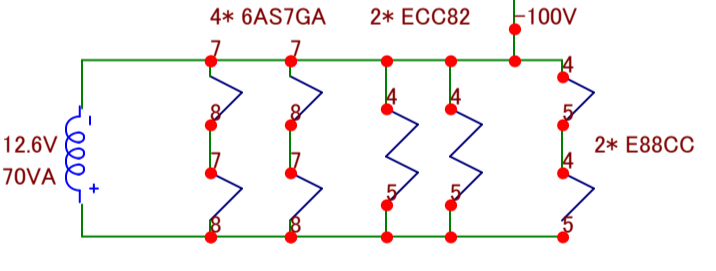
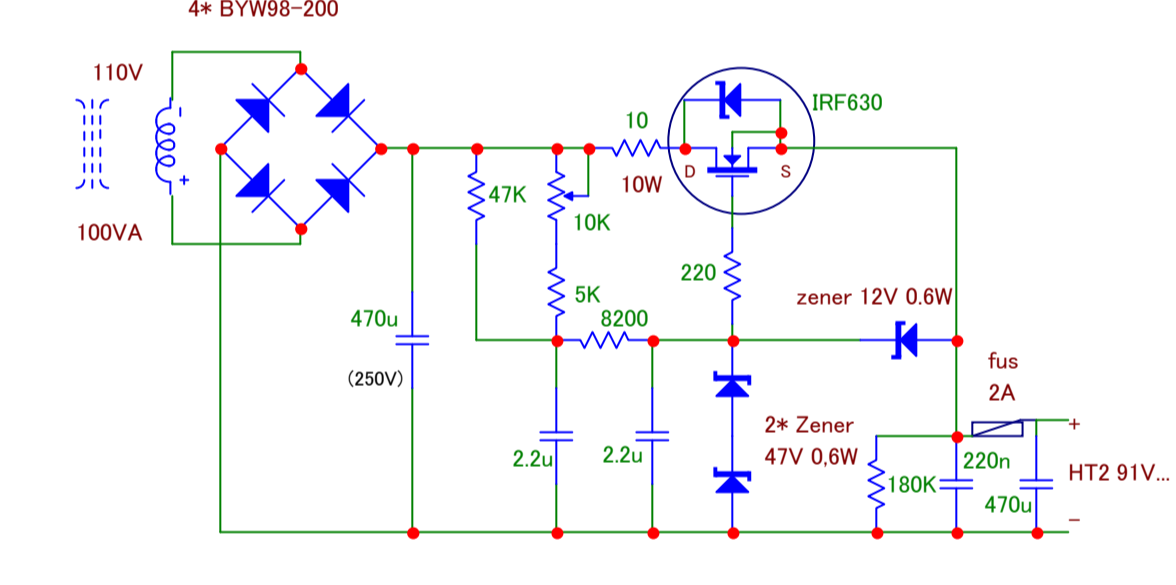
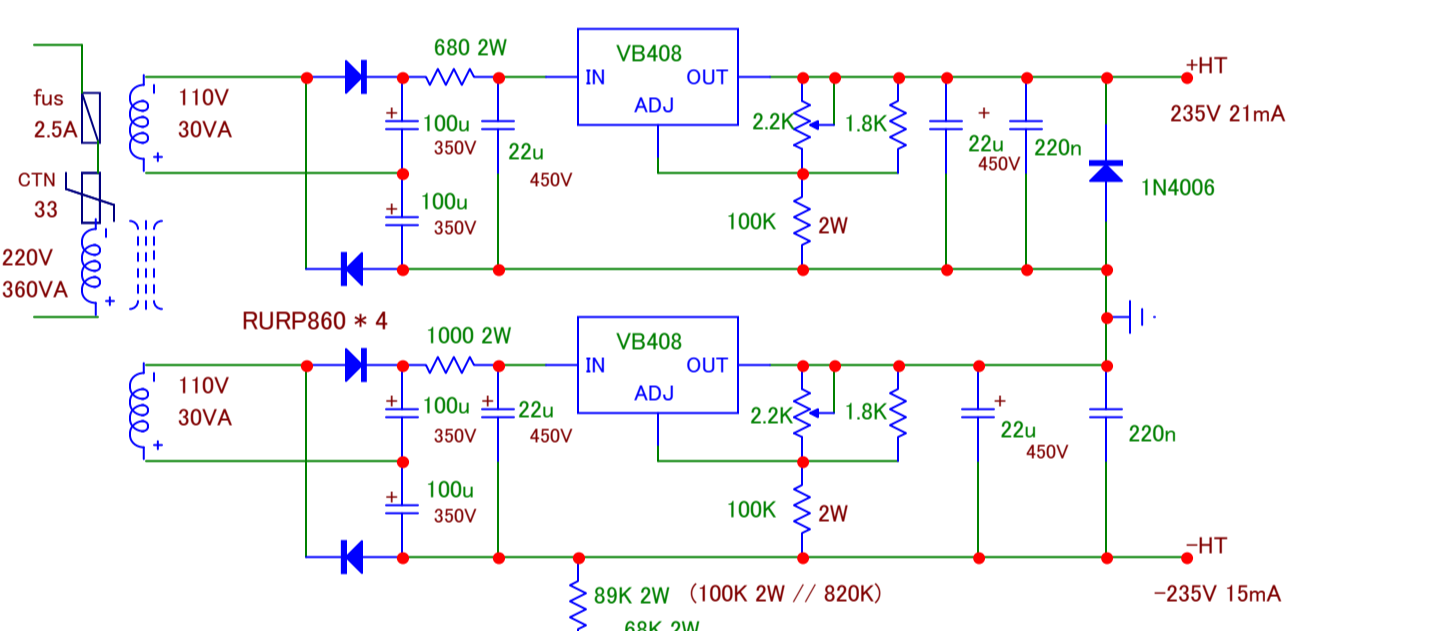
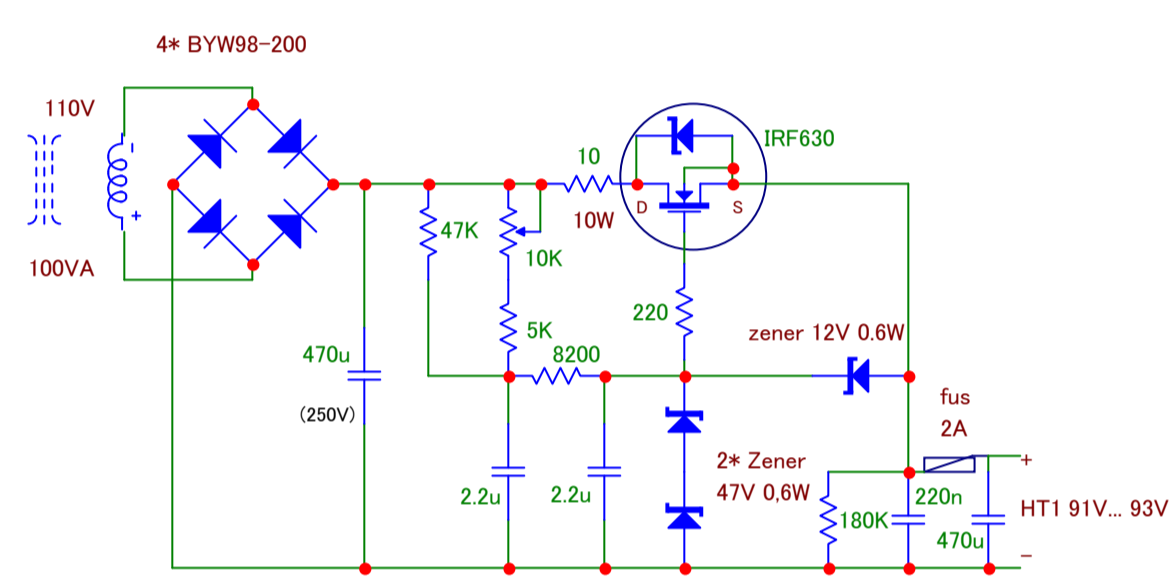
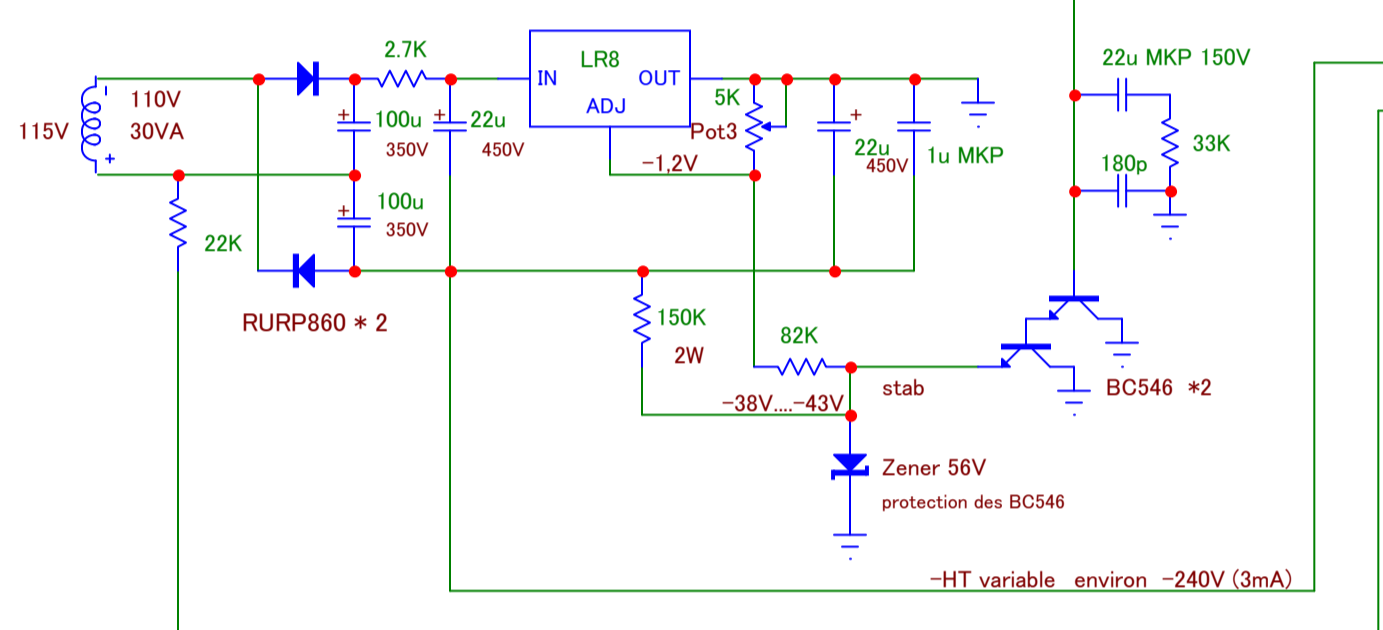
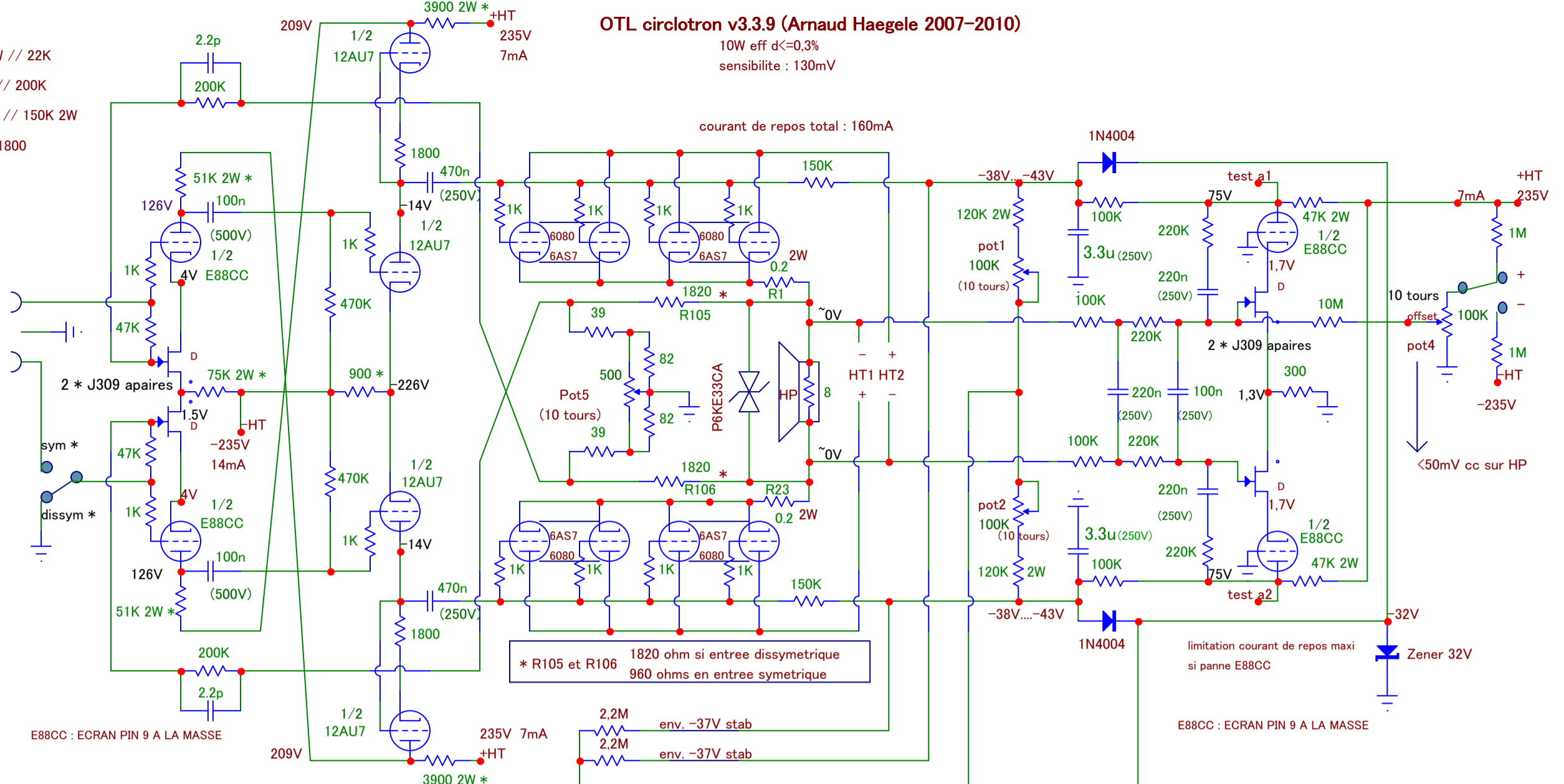


OTL circlotron v3.3.9 (Arnaud Haegle 2007-2010)

10W eff d<=0.3%
sensibilite : 130mV

- * 3900 = 4700 2W // 22K
- * 51K = 68K 2W // 200K
- * 75K = 150K 2W // 150K 2W
- * 900 = 1800 // 1800



- controle galvanique**
- 1 : courant de repos push
 - 2 : equilibrage 0V d'offset
 - 3 : courant de repos pull

+ - 50 uA
1800 ohms